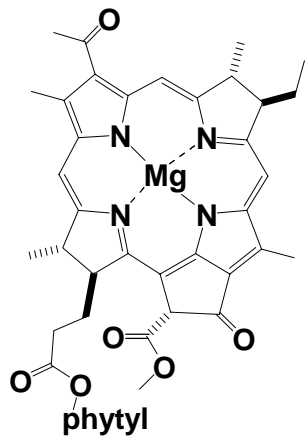
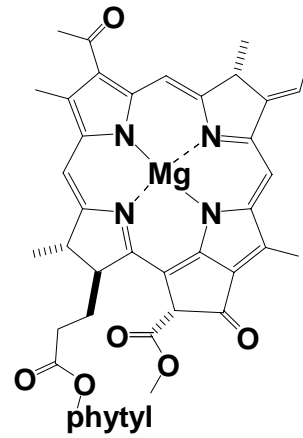


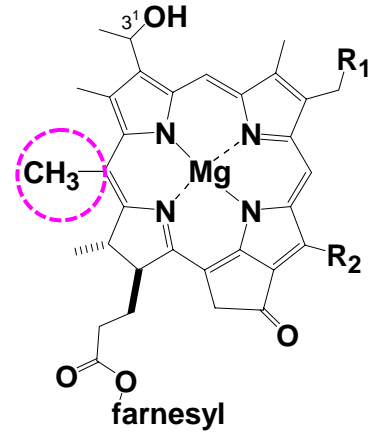
光合成細菌がもつバクテリオクロロフィル(BChl)色素分子種(7種)



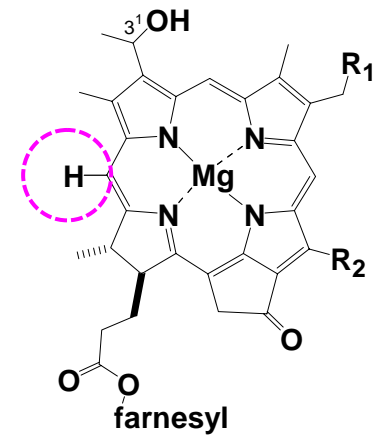
BChl a



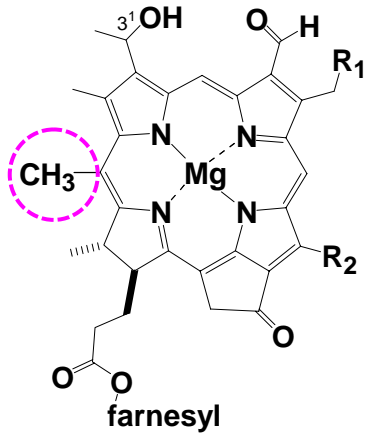
BChl b



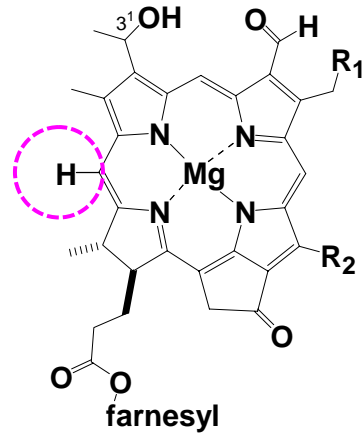
BChl c



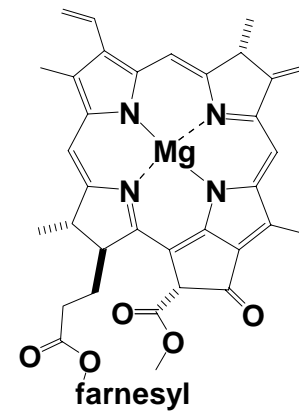
BChl d



BChl e
(1975年 発見)



BChl f
(2012年 発見)



BChl g
(1983年 発見)

In BChls c/d/e/f, the configuration of C-3¹ is R or S, R₁ = CH₃, CH₂CH₃, CH(CH₃)₂, or C(CH₃)₃, and R₂ = CH₃ or CH₂CH₃.